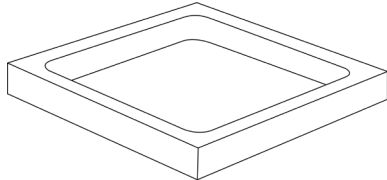



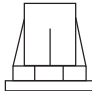


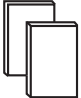
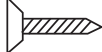

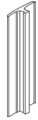




Solutions

Installation Instructions

Parts Supplied

Ref	Description	Illustration	Qty
A	Shower Tray*	 <p>*Shape of tray may vary from illustration</p>	1
B	550mm Radius Curved Panel*	 <p>*If your tray is Quadrant you will receive one panel B.</p>	1
B2	Universal Curved Quad Panel*	 <p>*If your tray is an Offset Quadrant you will receive one panel B2.</p>	1
C	1200mm Universal Straight Panels*	 <p>*If your tray is Square/Rectangle you will receive two of panel C.</p>	2
D	Feet Mounting Brackets		8
E	Threaded Feet /Spacer*	 <p>Spacers *x8 spacers may be present in some kits.</p>	8
F	Panel Upright Brackets		6
G	Magnetic Adhesive Panel Strip Pairs		6
H	Screws		44
J	Corner / End Bracket		3

Ref	Description	Illustration	Qty
K	Joining Brackets		2
L	Pentangle Joining Brackets		2
M	High Flow Waste Outlet		1

Note! Parts may differ from that shown.

Before You Start:

- Please study these instructions and installation options available before deciding on how you wish to install this tray.
- Please note that although these instructions are comprehensive we always recommend that a technically competent installer undertakes the installation.
- When handling your shower tray take care not to damage the bottom edges and when installing take particular care to protect the visible surfaces from impact damage or abrasions.
- Check that the shower tray is the colour, size, shape and type you require.
- Unpack and check for damage. Do not install if not satisfied.
- Check pack and ensure you have all of the parts listed or on any addendums supplied. If not please contact your supplier who will be able to help you.
- Check that the top surface of the shower tray (A) is compatible with your intended shower enclosure, taking into account the loss of dimension that will result after tiles etc have been fitted.

Note! The compatibility of the top surface of the tray and an enclosure is especially important if using a shower tray with a built in tiling upstand.

- If you install this shower tray in conjunction with a steam unit, you must ensure that the steam outlet is a minimum of 350mm from the top of the tray.
- When considering your installation method, you should be able to attach or repair your waste or waste outlet in situ.

Note! Fitting of this product is deemed as acceptance of its quality.

Floor Level Installations

Tools and Materials Required (not supplied)

- Drill
- Drill bit to suit floor screws
- Hole Cutter, size to suit the waste outlet with bottle trap used
- Jigsaw
- Pencil
- Spirit Level
- Floor screws, suitable to fix plywood to floor
- 18mm (Minimum) Plywood board
- Masking Tape
- General Plumbing Fittings
- Silicone sealant and Silicone cleaning solvent
- Screw Driver 'Cross Head'
- Compound Adhesive or a suitable contact adhesive

When you are ready to start make sure you have the right tools to hand, plenty of space and a clean dry area.

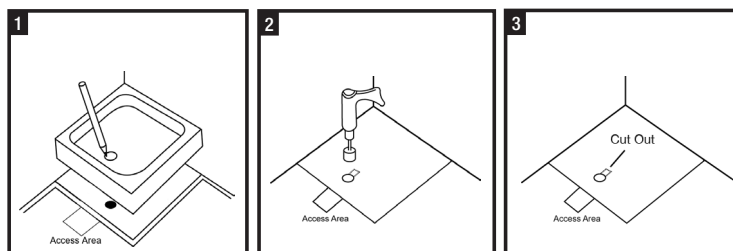
- 1 Place the shower tray (A) in position on the floor in the intended area and mark the area covered. If installing on a suspended floor, the total floor area (or larger) covered by the shower tray must be removed and replaced with a single piece of ply (min 18mm thick).

Note! Ensure that there is sufficient unobstructed area for the waste outlet and plumbing between joists.

- 2 Put the plywood in position, then place the shower tray on the ply and mark the waste hole location (See Fig 1).

- 3 Drill or cut a hole in the plywood suitable for the total size of the hi flow waste (M) being used and NO larger (See Fig 2).

Note! A small additional keyhole shaped cut-out for some types of shower tray waste outlets (M) may be required (See Fig 3).



- 4 Remove the plywood and install the pipe-work in accordance with building regulations, if in doubt consult a qualified plumber .

Note! If installing on a concrete floor the plywood board is not necessary but a trench for the waste pipe and trap will be required.

Note! Some shower trays have a protective film indicated by a label on the surface this should now be removed at this stage and a further inspection of the shower tray undertaken.

- 5 Before proceeding dry fit all items in situ to ensure compatibility and screw the ply into position if applicable and ensuring that the area is flat and level.

Note! It is normal for the shower tray to appear insecure when undertaking a test dry fitting.

- 6 If fitting the optional 'Versatile Seal Strip' (Flat top shower trays only) please follow instructions supplied with this item at this stage.

- 7 Apply compound adhesive or a suitable contact adhesive over the entire area to allow leveling and full support of the tray (See Fig 4).

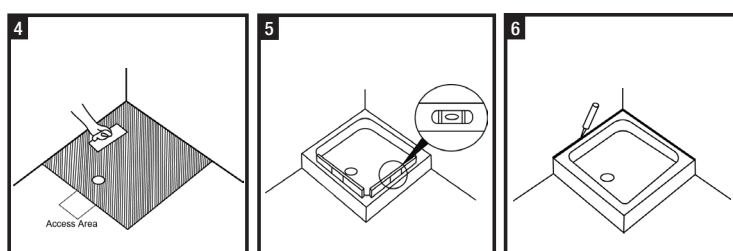
- 8 Attach the hi flow waste outlet (M) and place the shower tray (A) onto the wet adhesive ensuring it is fully supported. Level the outer rims only as the shower tray has a built in fall to allow adequate drainage (See Fig 5).

Note! Ensure tray is fully stuck down, weight down if necessary.

- 9 When the adhesive has set, remove any excess and connect all plumbing the tray **MUST** now be checked for water tightness and adequate drainage from all areas.

After all checks and adjustments, seal along the tiling line with silicone sealant, if necessary use a proprietary silicone cleaning solvent prior to application (See Fig 6).

Note! When fitting a shower enclosure refer to the manufacturer's installation instructions.



Raised Installation

Tools and Materials Required (not supplied)

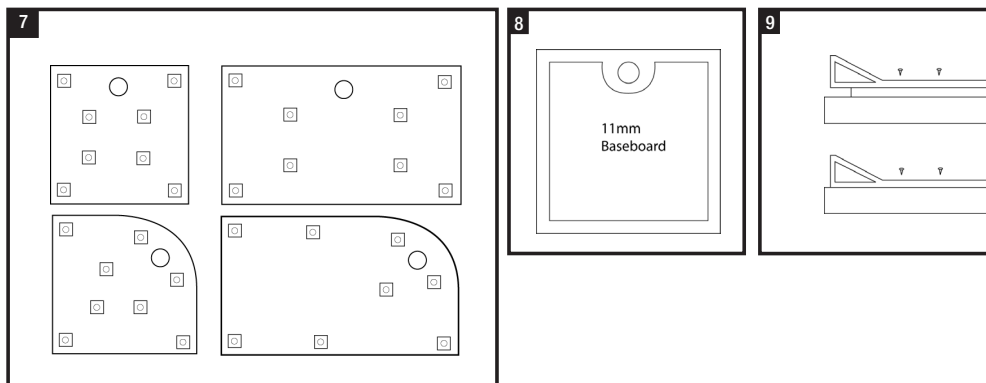
- Spirit Level
- 11mm (Minimum) Plywood board (for additional support see section 2)
- General Plumbing Fittings
- Silicone sealant and Silicone cleaning solvent
- Cross-head Screw Driver
- Compound Adhesive or suitable contact adhesive
- Hacksaw
- Sharp Knife or Mitre Saw
- Jigsaw

1 With the shower tray upside down fit eight feet mounting brackets (D) (No closer than 80mm from the edge of the tray) using four screws (H) each to the shower tray (A) to form an evenly supported structure (See Fig 7).

2 For trays 1200mm and above additional support must be given by the addition of a cut 11mm thick board (Not supplied) to suit the size and shape of tray purchased prior to the fixing of the feet mounting brackets (See Fig 8), this **MUST** be 30mm from any edge of the tray and fixed to the underside using a compound adhesive or similar.

Note: Additional support can be given to smaller trays if required.

3 Screw the panel upright brackets (F) using two screws (H) per bracket to the shower tray (A) or 11mm board, evenly spaced 6mm from the edge of the tray adjacent the open / panel sides of the installation avoiding any other items (See Fig 9).

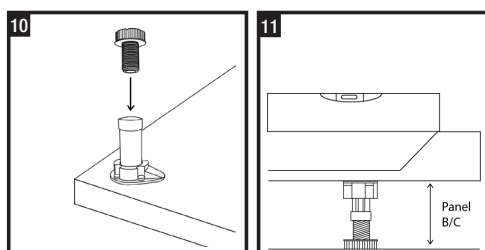


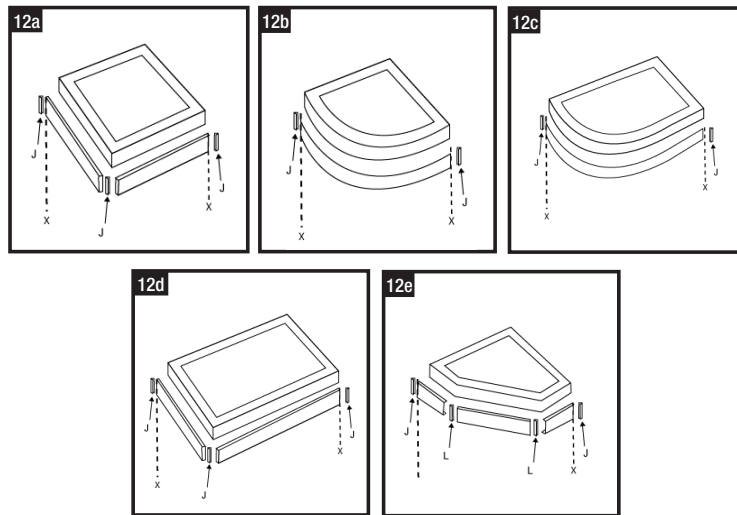
4 Screw the Threaded Feet (E) into the Feet Mounting Brackets (D) (See Fig 10) and adjust to suit height of panels (B or C).

5 Install plumbing in accordance with building regulations, if in doubt consult a qualified plumber.

6 Attach the hi flow waste outlet (M) to the shower tray (A) and turn the tray upright, then place the tray into its chosen position and connect plumbing. Level the tray from the top rims only as the tray has a built in fall to allow adequate drainage, using the threaded feet (E) (See Fig 11).

Note! Some shower trays have a protective film indicated by a label on the surface, this should now be removed at this stage and a further inspection of the tray undertaken.





7 If fitting the optional 'Versatile Seal Strip' (Flat top shower trays only) please follow instructions supplied with this item at this stage.

8 Using panels sets (B) (B2) or (C), trim at line (X) to suit the size and shape of tray purchased (See Fig 12a, b, c, d & e) and attach Corner / End Brackets (J) or (L) by removing the coloured covering from the adhesive strips.

Note! Test fit all panels before final assembly.

Note! Some panels have a protective film indicated by a label on the surface, this should be removed before fitting.

9 Remove one of the coverings from one side of the adhesive strips on the 'magnetic adhesive panel strip sets' (G) and adhere to each panel upright bracket (F) (See Fig 13).

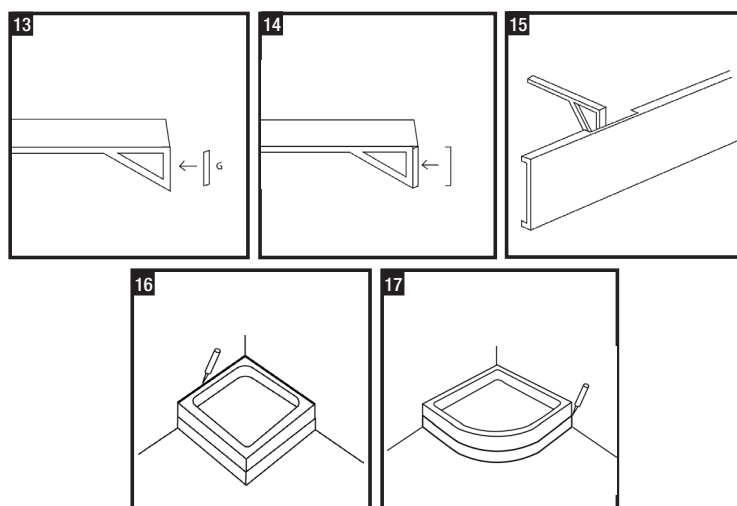
10 Remove the remaining outer coverings from the adhesive strips on the 'magnetic panel strip sets' (G) attached to all the panel upright brackets (F) and then push the assembled panels (B) (B2) or (C) into position onto the ends of the brackets (F) (See Fig 14).

Note! The top return edge of panels (B, B2 or C) will require a notch cut out in the area of the panel upright brackets (F) when NOT using the 11mm board (See Fig 15). Check the fit of the panels and adjust if required.

11 After all checks and adjustments, seal along the tiling line with silicone sealant, if necessary use a proprietary silicone cleaning solvent prior to application (See Fig 16).

Note! The panels can be sealed along the joining edges if required (See Fig 17).

Note! When fitting a shower enclosure refer to the manufacture's installation instructions.



Care & Use of Your Shower Tray

Water feeds where possible should not be connected to a water softener system as salts used with some types of units may discolour the surface.

It is normal for small amounts of localized water to be retained in the shower tray after use which should be wiped dry immediately to prevent build up of mineral sediments.

The shower tray should be cleaned with warm, soapy water only. Do not use scourers, abrasives or chemical cleaners.

For your safety we recommend the use of safety mats with grab rails situated within and around the showering area.

Troubleshooting

- Q** The waste outlet in the tray is directly over an obstruction at floor level.
A Consider switching to a 'Raised Installation' or re-locating shower tray.
- Q** The waste outlet will not fit through the plywood and connect with the plumbing.
A Cut a slightly larger hole with a key section over the connection point.
- Q** There is water retaining in the base of tray.
A Check that the tray is level (top rims) and assess if the amount is excessive as it is normal for small amounts of localized water to be retained.
- Q** The tray appears slightly springy/insecure when walked on.
A Tray has not been fully stuck down or if (Raised) will require a baseboard to be attached.

Technical Service Line 01684 293311
Monday - Friday, 9am - 5pm