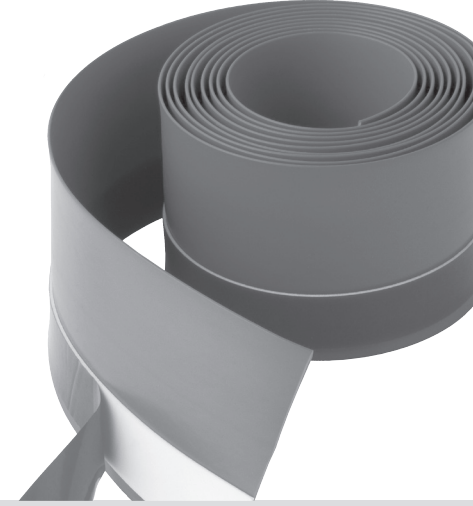




Flexi Seal Strip



657FQ 29/7SD



Marleton Cross Limited Trading as **The MX Group**

Alpha Close, Delta Drive, Tewkesbury Industrial Estate, Tewkesbury, Gloucestershire GL20 8JF
Tel: 01684 293311 Fax: 01684 293900 Email: sales@mx-group.com www.mx-group.com

TRADE DESCRIPTIONS ACT

Variations in terms of colour finish, materials and all other aspects of appearance may occur on occasions, either through non-availability of materials or due to our policy of continuing technical improvement. Therefore the Company reserves the right to change specification or withdraw products from this list without prior notice being given.

Before you Start

This product is intended as a flexible tiling upstand for Shower Trays and Baths but may be used in other tiling seal applications such as Kitchen Worktops or similar.

Please read these instructions fully in conjunction with all other installation instructions such as Baths and Shower Trays.

Although these instructions are simple and comprehensive, we always recommend that a technically competent installer undertakes the installation.

Your Flexi Seal has been manufactured to the highest quality standards. However, to ensure that you have received the correct product in the condition you expect, please undertake the following four basic preinstallation checks. **DO NOT INSTALL IF NOT SATISFIED** and contact your supplier.

1. Check the Seal roll length purchased is sufficient for your application.

2. Check that you have received all the parts listed.

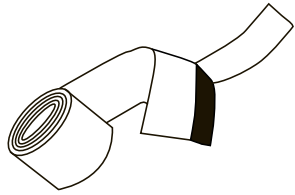
3. Check that the Shower Tray, Bath or Worktop is compatible i.e. having sufficient smooth depth to permit fitting of the Seal Strip.

4. Check that the Seal Strip is undamaged and has not been crushed or perforated.

Note! Installation is acceptance of quality.

Parts Supplied

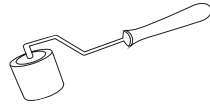
A Flexi Seal Strip x 1
IPA Wipe x 1



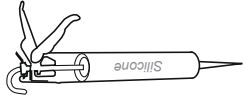
Tools and Materials Required (Not supplied)



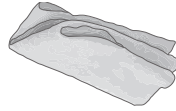
Scissors



Small Roller



Clear Silicone Sealant



Damp Cloth

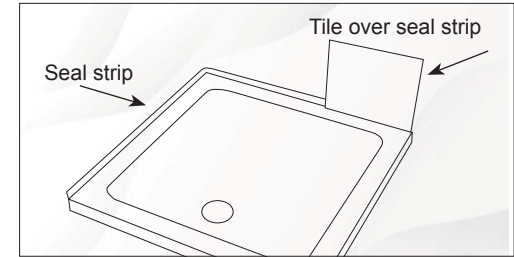
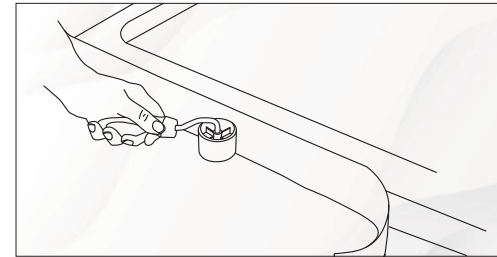
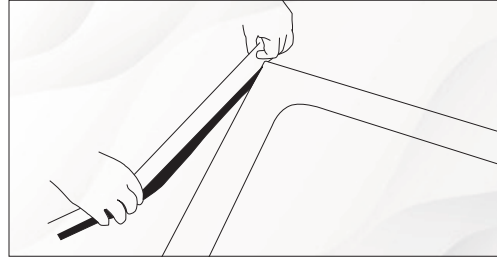
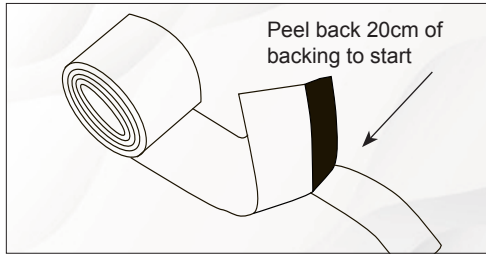
Other tools not listed may be required for some installations

Installation Method

Your Flexi Seal Strip is intended to fit on the sides of Shower Trays, Baths or Worktops adjacent to the walls and behind the tiles or boarding. The purpose of which is to form an additional water leakage barrier and minimising possible leakage if the outer silicone should fail.

Note! We do not accept responsibility for any loss or damage resulting from failure to comply with installation instructions.

Installation



1. Remove the roll from the box and fully extend, undertake the basic checks as shown in the section Before you Start.

2. Remove any protective film from the edge of the Bath, Shower Tray or Worktop only to which the Seal Strip is intended to be attached. Ensure the edge is smooth flat and clean.

3. Wipe the edges where the strip will be attached first with a clean damp cloth, allow to dry and then wipe with the IPA wipe supplied in the box.

4. Determine the length of strip required to apply to the edge and cut to length with a scissors ensuring you have at least 100mm longer than needed for possible errors.

5. Carefully peel back 20cm of the film attached to the adhesive strip taking care not to remove the strip from the PVC.

6. Progressively peel back the film attached to the adhesive strip in manageable lengths starting from an outer corner.

7. Gently pull the length taught and affix the top of the adhesive strip level with the sides of the Bath, Shower tray or worktop.

Note! If the sides of the Bath, Shower Tray or Worktop are tapered it may be necessary to pucker the corners to ensure that the strip will fit against the adjacent walls.

8. When applying use a small roller or other similar tool to roll the strip to remove any wrinkles, bubbles or creases and ensure that the strip is firmly attached to the edge of the Bath, Shower Tray or Worktop.

9. When completed, trim off any excess and apply a good quality neutral cure silicone along the interface between the Seal strip and the edge of the Bath, Shower Tray or Worktop as applicable.

10. When the silicone has dried locate the Bath, Shower Tray or Worktop as applicable and fully install in accordance with the installation instructions supplied with the product.

11. Tile or board over the Flexi Seal Strip and down onto the surface of the Bath, Shower Tray or Worktop as applicable, taking care not to damage the visible surfaces.

Note! Do not attach the Flexi Seal strip to the walls or tiles or boarding.

12. When tiling or boarding has been completed weight down the Bath, Shower Tray or Worktop as applicable. Apply a good quality neutral cure silicone or a suitable polymer sealant along the interface between the tiles / boarding and the top edge of the Bath, Shower Tray or Worktop as applicable.

Troubleshooting

Q I have to use two short lengths of Flexi Seal Strip can I make joint:

A For best results only use a single continuous length. However, if forced to make joint firstly, do not locate in a corner and form a minimum overlap on a straight side of 100mm. Secondly, Seal between with a good quality neutral cure silicone or a suitable polymer sealant.

Q Step (11) states: Do not attach the Flexi Seal strip to the walls or tiles or Boarding. Why can't I glue or nail the strip to the wall for extra security.

A The Flexi Seal Strip is designed to float behind the tiles or boarding i.e. if a Bath, Shower Tray or Worktop should drop due to structural movement and the tiling edge silicone fails, the Seal Strip stays with the product to form an additional water barrier and minimising possible leakage until correction and or fresh silicone is applied.

Q Is the adhesive strip waterproof or is it relying on just the silicone.

A The adhesive strip is waterproof and the purpose of the silicone at step (9) is simply a secondary seal i.e. there are three barriers to prevent leaks firstly the outer silicone between the Tiles / boarding. Secondly, the silicone between the interface of the Seal Strip and the edge of the Bath, Shower Tray or Worktop as applicable. Finally, the Seal Strip itself.

Q Why does it state to use a good quality neutral cure silicone or a suitable polymer sealant.

A Standard acid-based (Strong vinegar-like smell) silicone, also known as acetoxy silicone can discolour badly. However, neutral cure silicone or a suitable polymer sealants are less likely to discolour and is considered generally safer to use as being less corrosive.

Q I can force the adhesive strip from the PVC, is this normal.

A Yes but please take care not to remove the strip from the PVC at any step as it will be difficult to relocate.