

Fitting and Maintenance Instructions

CAUTION: Check there are no hidden cables or pipes before drilling holes. Use great care when using power tools near water. The use of a residual current device (RCD) is recommended.

TIPS: A piece of insulating or masking tape applied to the wall surface will help stop the drill bit from wandering, particularly on tiled surfaces. When working near a basin, bath or shower, plug or cover the waste outlet to avoid losing small parts. Take care not to drop accessories or tools into the basin, bath or shower.

WARNING: Avoid risk of scalding. Always check water temperature before using the spray. Recommended domestic hot water supply temperature should not exceed 60°C.

Due to ongoing product development we reserve the right to alter specification and/or colours without prior notice.

Tools required

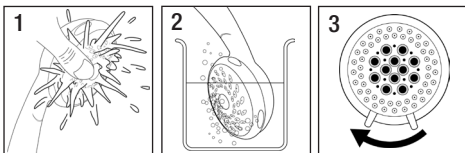
Pencil, Tape Measure, Screwdriver, Drill and Hacksaw.

Showerheads

Cleaning Instructions (all types)

The showerhead should be cleaned periodically to remove lime scale or debris, which will reduce the performance of the shower. Frequency of cleaning will vary according to local water quality.

Periodical Maintenance

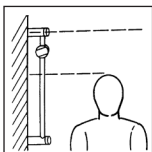


1. To break away scale on a daily basis rub your thumb over the surface whilst the shower is running.
2. If scale deposits are stubborn, soak the showerhead in proprietary limescale remover and rinse thoroughly before use.
3. Some showerheads are fitted with self clean probes, to help with the removal of limescale. These probes can be activated by rotating the lever clockwise.

WARNING Avoid risk of scalding. Always check water temperature before using the shower.

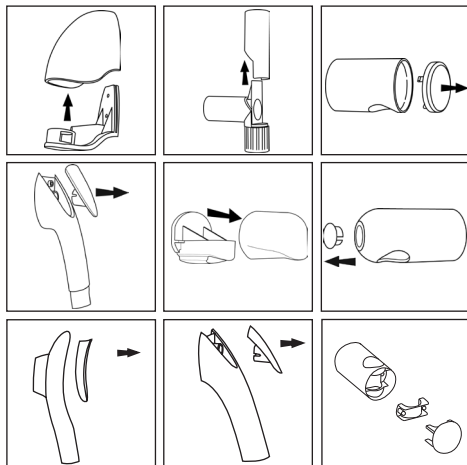
Riser Rail & Soap Dish

Fitting Instructions

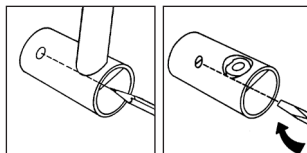


1. Establish height of riser rail to suit users requirements.

2. Remove caps and covers from brackets (select type)



3. Drill and plug the wall and fix the lower bracket without the rail locator notch.

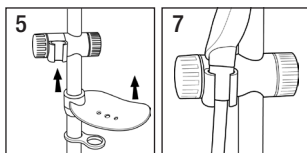


4. Fit rail through lower bracket and clamp. Place the remaining bracket on top of the rail making sure the slot in the rail is located in the notch. If replacement riser fix and screw into existing hole. If new installation ensure the hole position is vertically aligned and mark the wall. Unclamping the lower bracket and remove the rail then drill and plug the wall.

5. With the handset holder on the left hand side, fit the soap dish then the hose retaining ring onto the bottom of the rail assembly.

6. Replace the rail assembly through the lower bracket and clamp. Fix top bracket to wall and then loosen lower bracket and fit rail into top bracket ensuring the slot locates into the notch and retighten lower bracket. Refit caps.

7. **NOTE:** The adjustable slider grips the conical nut on the shower hose.



Shower Hoses

These products are universally suitable for all bathroom and shower applications.

Clean regularly with a non-abrasive household cleaner.

These products are designed for use with temperatures up to 60°C. Water temperatures above this are considered dangerous for use in showers. Do not use damaged or broken hoses.



Curtain Track Kit (Glider Track System)

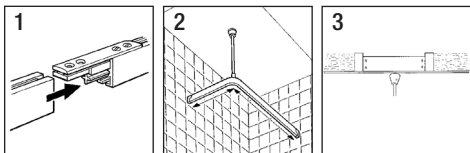
CAUTION Check there are no hidden cables or pipes before drilling holes for wall plugs. Use great care when using power tools near water. The use of a residual current device (RCD) is recommended.

TIPS A piece of insulating or masking tape applied to the wall surface will help stop the drill bit from wandering, particularly on tiled surfaces. When working near a basin, bath or shower, plug or cover the waste outlet to avoid losing small parts. Take care not to drop accessories or tools into the bath, basin or shower.

Fitting Instructions

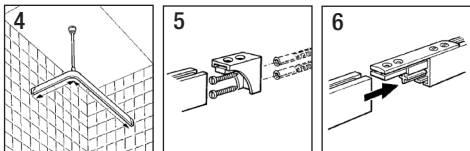
1. Lightly assemble the chosen rail arrangement, including ceiling support socket and wall brackets. To join rails, push the cruciform dowel into the centre of one rail, then loosen screws of joining piece and slide into top channel.
2. Hold the assembled rail against the ceiling, directly above the desired position, a mark the ceiling for the support bracket. Use a 3mm drill to make a pilot hole for the support bracket screw.
3. Locate the nearest suitable joist for the ceiling support.

NOTE: In some cases it may be necessary to fit a cross bearer between two joists. Securely fix the ceiling support.



4. Test the rail's position against the ceiling support. If it necessary to shorten a rail use a junior hacksaw, remove burrs with a fine file. The ceiling support rod may be shortened if necessary, e.g. for a particularly low ceiling.
5. Carefully mark the positions of the wall brackets, ensuring that the rail assembly is level and square. Use a No.10/5.5mm masonry drill to make holes 35mm deep. Insert the wall plugs and secure the wall brackets.
6. Align second rail with the dowel and joining piece and push the two rails together.

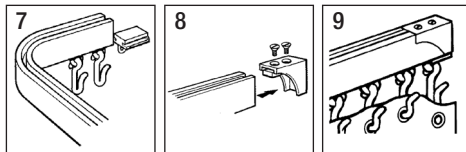
NOTE: Ensure the ceiling support connector is fitted before joining rails.



7. Insert the gliders, hooks and glider end stops into the rail channel.
8. Fit the track to the wall brackets and ceiling support and tighten all the locking screws.

NOTE: If a straight track is being fitted it will be necessary to undo the track inserts from the wall brackets and place them in the track *before* offering the rail to the bracket.

9. Hang curtain onto glider hooks.

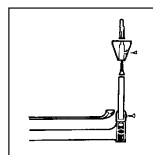


Ceiling Support Kit

CAUTION Check there are no hidden cables or pipes before drilling holes for wall plugs. Use great care when using power tools near water. The use of a residual current device (RCD) is recommended.

Fitting Instructions

1. Locate the nearest suitable joist directly above the rail for the ceiling bracket and mark the ceiling. Use a 3mm drill to make a pilot hole and screw the bracket to the ceiling. **Note:** In some cases it may be necessary to fit a cross bearer between the joists for the ceiling bracket.
2. Slide the ceiling support connector into the top of the track.
3. Fit the support rod into the bracket and connector then tighten the lock screws onto the rod.

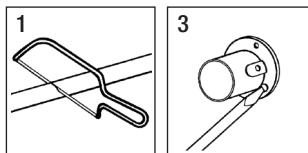


NOTE: The support rod may be shortened if required.

Modular Rail Kit (Tube)

Fitting Instructions

1. Trim rails to length if necessary with junior hacksaw, cutting at wall bracket end not joining ends
2. Assemble shape of your choice and hold against wall in desired position. Using wall bracket as template mark position, checking for level.
3. Drill, plug and screw bracket to wall.



4. Push rod through wall bracket cover and on into wall bracket, no screw to secure rod (not required).
5. Conceal wall bracket and fixings by sliding cover into position.
6. Finally, fit curtain rings and curtain.

