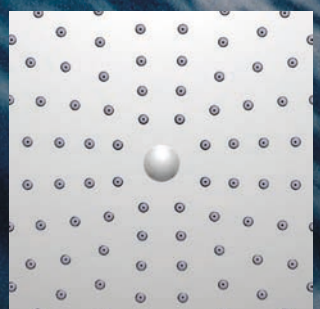
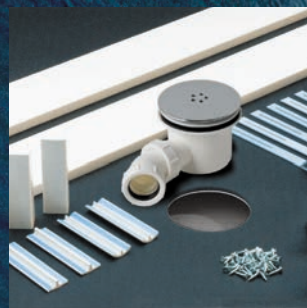
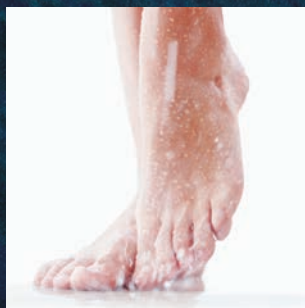
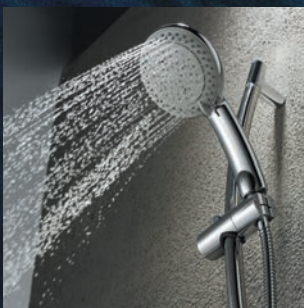
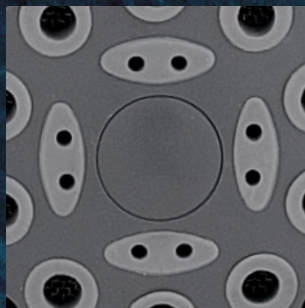
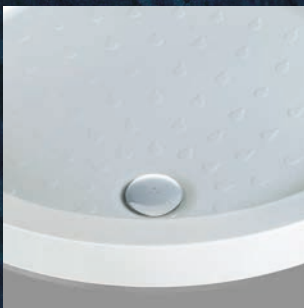
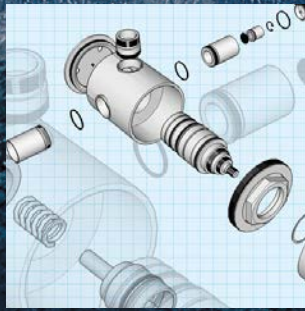


COMPANY PROFILE



www.mx-group.com



Our Vision

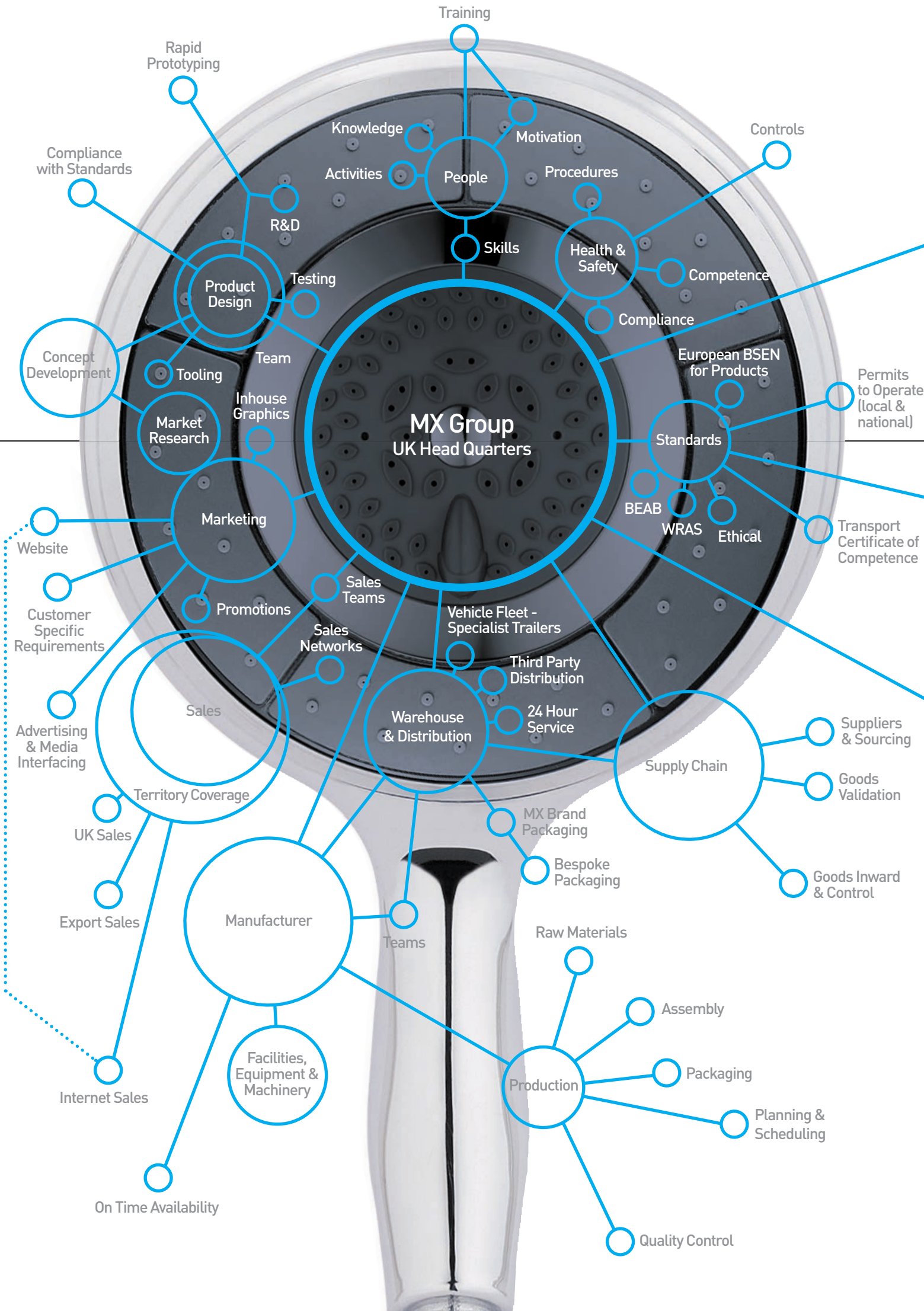
“To provide the market and our customers with a complete showering solution”

Our Mission

“Manufacture and supply product to the highest quality standards, through innovation, excellence of service and value.

To encompass the respect of our employees and develop long-lasting relationships with customers and suppliers”







We are....

Quality - ISO 9001



Marleton Cross Limited (trading as The MX Group) was founded in 1974 by its current Chairman. Since then the company has grown into a key manufacturer and supplier to the shower industry.

MX manufactures shower trays in Tewkesbury, Gloucestershire. This 90,000 sq ft site also acts as the Head Quarters and transport centre for the company. The MX shower accessory division operates out of a 40,000 sq ft factory located at Ross on Wye in Herefordshire. The joint ventures with our manufacturing partners in

China make MX the leading supplier in this market sector.

Having invested in the latest machinery and materials MX is recognised as the leading manufacturer of shower trays in the U.K. producing many different types in hundreds of different shapes and sizes. This gives MX the capability to cater for the individual needs of all customers.

MX continues to invest in new innovative ideas and the use of the latest materials, in design, innovation and equipment, and will ensure it retains its competitive edge.



www.mx-group.com

STATS

- Founded in 1974
- HQ and Shower Tray Manufacture total area of 90,000 sq ft
- Shower Accessories total area of 40,000 sq ft
- Company Standards: BSEN, WRAS, BEAB
- BS EN ISO-9001
- Largest Manufacturer of Shower Trays in the UK
- Production of over 6000 Shower Trays a week
- Distribution to: United Kingdom, Eire & EU, Gibraltar, Australia, New Zealand





foot fall....



At the MX Group we see our people as our biggest asset. We employ circa 200 highly trained and experienced staff, many of whom have spent their entire career in the shower and plumbing industry and fully understand the business they operate in.

The MX Group is a Sales and Marketing organisation producing the best product for the market place, hence it is essential the business is fully streamlined and runs with seamless efficiency. Add to that the ability to produce bespoke offerings to all our clients' needs requires a dedicated platform of highly skilled people.

The production teams cover R&D, product design, technical production and process engineering. These teams ensure the right product is produced with efficiency and technical excellence using the most up to date equipment and materials.

Our sales team spans the UK, Eire and EU catering for all types of customer and their individual needs. Our procurement teams, working in the U.K. and overseas with our chosen partners, ensure our specified products are manufactured to the highest level that the MX Group demands and are supported by our Quality Control employees. In addition our own transport and specialist logistics fleet ensures products are delivered on time.

Within the company we run a myriad of comprehensive training programs, both internally and externally, including Health & Safety, Human Resources, Computer systems etc. alongside educational and vocational degree level programs.

And of course all of this is 'backed up' with a full CRM system and 'Customer after Sales Department.



STATS

Circa 200 UK Employees including agency staff

Years of combined experience

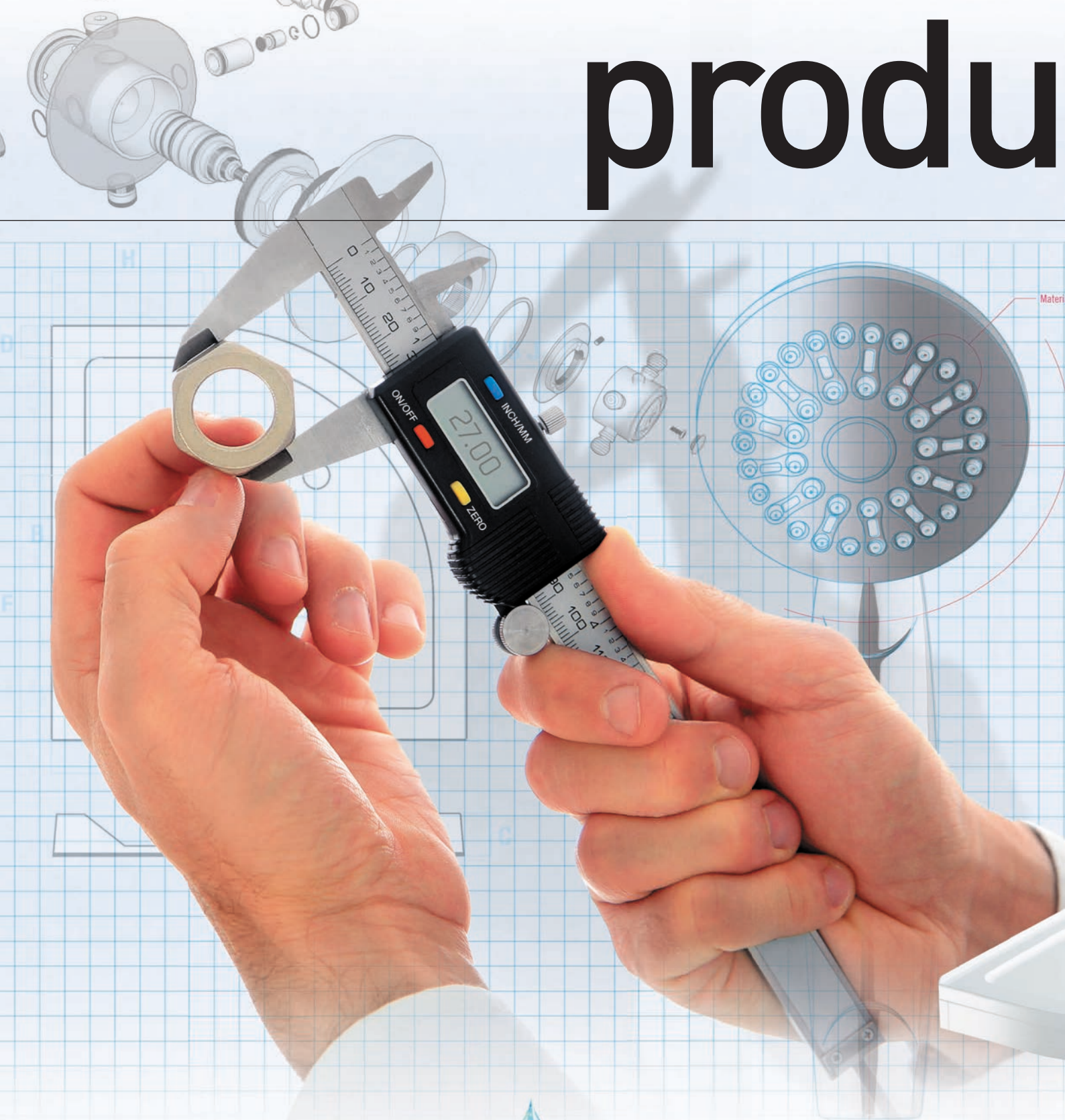
Private ownership

Specialised Staff Training programs

Comprehensive inhouse product development teams



produ



TMV2 Approval
property of:
Taizhou Guoren
Thermostatic
Sanitaryware
Co. Ltd



All materials
used to make
MX Shower
Trays are 100%
recyclable





ct lines....



MX produces a great range of showering products which includes;

- **Shower Trays**
- **Electric Showers**
- **TMV Shower valves**
- **Shower Accessories**
- **Shower Hoses**
- **Shower Enclosures**
- **Point of Use Water Heaters**

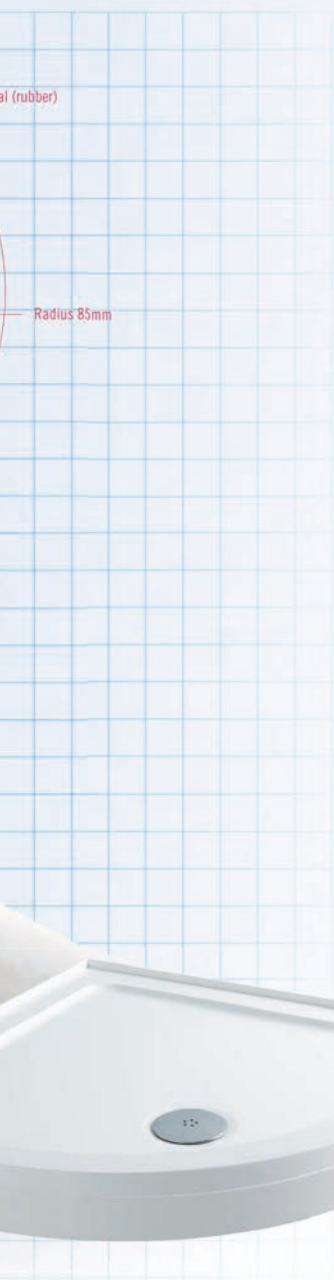
Pretty well every aspect of showering is covered, MX's knowledge of UK water systems has enabled it to design and manufacture products truly fit for purpose and function.

MX has been at the forefront of this sector for many years and ensures that it's products meet all the health and safety requirements and comply with all relevant British Standards

and wherever possible uses WRAS approved and Phthalate free materials.

MX Electric Showers are all BEAB approved and come complete with a full service backup. Recently MX has launched an ever growing range of Thermostatic Mixer Valves. These TMV2 and WRAS approved valves mean that MX has now become a very influential player within this market sector.

MX is the largest producer of shower trays in the UK with a weekly output of some 6000 trays covering over 200 types and variations. A new venture for MX is the shower enclosure market with the acquisition of the U.K. division of Flair International. This has expanded the portfolio of the MX offering in all aspects of showering.



STATS

- Over 200 Shower Tray variations
- 2500 Shower accessory products
- Suitable for all UK water systems
- Sold through most major plumbing merchants throughout the UK

all t





ogether....

Having a great portfolio of products is one thing but delivering a first class service is another. Our vision statement sums up our aspirations...

'To Provide the Complete Showering Solution'.

Good business relationships are critical, delivering our promise is essential and total trust in a highly competitive market place is a deal maker or breaker. Working closely with our clients we aim to build long lasting and successful relationships. Delivering innovative products at competitive prices often packed in the customers bespoke packaging is just one of our aims.

We supply to most of the major UK DIY stores and many specialised plumbing and bathroom centres.

We have our own in house team of designers who support our clients with branded packaging, POS material, technical manuals and indeed any aspect that helps them market the products.

We also integrate into our customers working systems with coordinated stock control, using kanban and JIT. Customer satisfaction is at the top of our list, thus ensuring harmonious relationships with clients that last for many years.

Finally our transport fleet gives us the control so when we make a promise we can keep to it. We offer a 24 hour delivery throughout the UK so customers can be assured of always having stock on the shelves and in turn keeping their customers satisfied.



Our Environmental Policy

Marleton Cross Limited and its subsidiaries ("MX Group") understand that a policy of environmental responsibility, involving the active management of the environmental aspects of our manufacture of shower trays, moulds, injection mouldings and all other operations, should be among our highest business priorities.

Such a policy is an essential element in complying with relevant laws, regulations and industry codes of practise and constitutes sound commercial sense by ensuring that we make effective use of energy, utilities and raw materials, thereby conserving natural resources for our future.

This policy is implemented and achieved in practise by: Establishing and maintaining an environmental management system, in accordance with the requirements of BS EN ISO-14001, as part of the overall management system.

Establishing challenging, though achievable objectives and targets, with related action programmes, for the continual improvement of our environmental performance.

Designing, conducting and monitoring all process and support operations in order to minimise adverse environmental impacts, thereby seeking to prevent any polluting emissions and discharges and comply with all relevant licenses and consents.

Monitoring and controlling material usage in order to minimise generation of waste and maximise recycling or re-use, thereby reducing the impact and cost of landfill use.

Ensuring that the policy is understood by all employees, contractors and visitors, who shall have a duty to be aware of, and comply with, this policy at all times.

Ensuring that our suppliers and subcontractors are made aware of this policy and that wherever appropriate they are actively encouraged to conduct their own operations in accordance with good environmental practise.

Conducting regular audits and periodic reviews, to ensure that our management system continues to be suitable and effective and taking action where deficiencies are evident.

This policy is formally issued to all employees, contractors and suppliers, is displayed for information to all visitors and is available to external parties or individuals upon application to the Group Operations Director.

This statement represents the commitment of the Management and work force to MX Group's Policy. Awareness of this Policy is established during the relevant phases of MX Group's training and is a mandatory requirement of all personnel.



www.mx-group.com

Marleton Cross Limited Trading as The MX Group

Alpha Close, Delta Drive, Tewkesbury Industrial Estate, Tewkesbury, Gloucestershire GL20 8JF
Tel: 01684 293311 Fax: 01684 293900 Email: sales@mx-group.com www.mx-group.com

TRADE DESCRIPTIONS ACT

Variations in terms of colour finish, materials and all other aspects of appearance may occur on occasions, either through non-availability of materials or due to our policy of continuing technical improvement. Therefore the Company reserves the right to change specification or withdraw products from this list without prior notice being given.